

# Measuring Time & Temperature

---



1. a) How many days are there in January?  
b) Which months have 30 days?  
c) What is special about February?

(5)

2. John was born on 13 January 1998.  
Write this date using numbers only.



(3)

3. Write these dates using the name of the month.  
Example: 26/7/78 is the 26<sup>th</sup> July 1978

a) 19/9/98

b) 30/10/70

(2)

4. Mr Wilson leaves Dumfries at 8.50 am to drive to Aberdeen. During the journey he stops for lunch for 35 minutes and for a rest for 25 minutes. He arrives in Aberdeen at 3.35 pm.  
Calculate the length of time for which he was actually driving.



(3)

5.

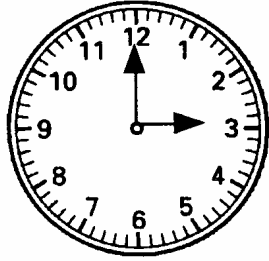
<i>Friday</i>	<i>?</i>
<i>February 25</i>	<i>March 10</i>
<i>1980</i>	<i>1980</i>

- a) Was 1980 a leap year? Explain your answer.
- b) What day of the week was March 10th?

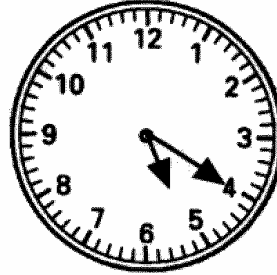
(4)

6. Write these times in twenty four hour time.

a) morning:



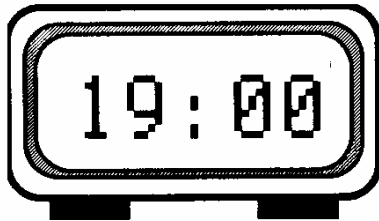
b) evening:



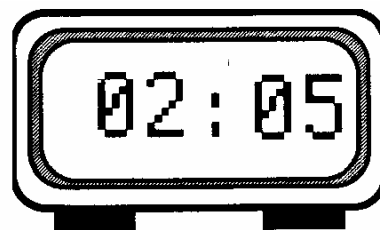
(2)

7. Write these times in twelve hour time.

a)



b)



(2)

8. This timetable gives details of the InterCity trains between London (Euston) and Inverness.

<i>Euston</i>	<i>depart</i>	<i>2230</i>	<i>Outward Journey</i>
<i>Inverness</i>	<i>arrive</i>	<i>0930</i>	
<i>Inverness</i>	<i>depart</i>	<i>1930</i>	<i>Return Journey</i>
<i>Euston</i>	<i>arrive</i>	<i>0649</i>	

a) How long is the Euston → Inverness journey?



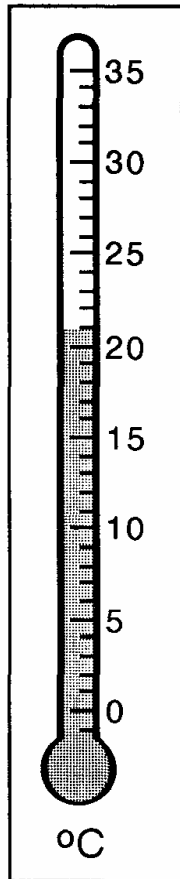
b) How long is the Inverness → Euston journey?



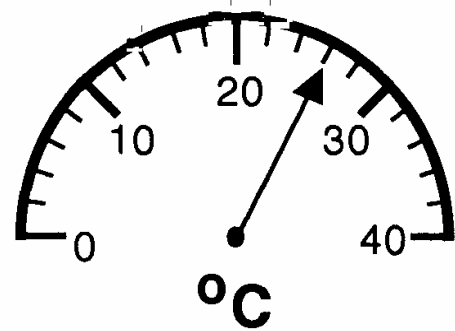
c) Which journey is quicker and by how much?

9. Write down the temperature shown by each thermometer.

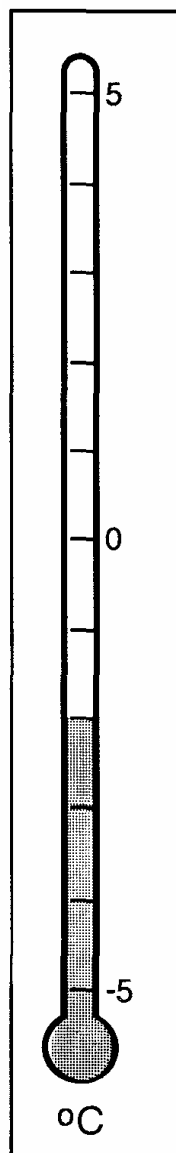
a)



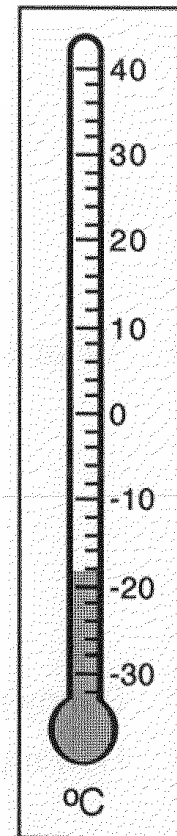
b)



c)



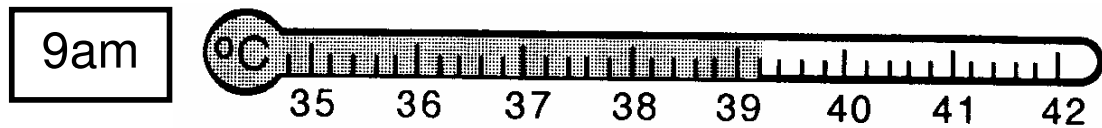
d)



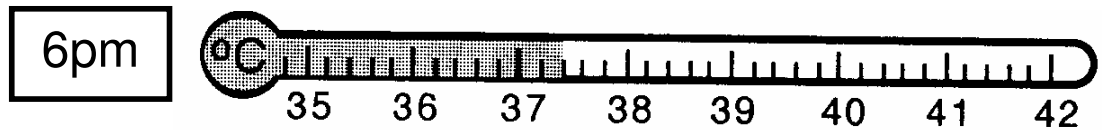
(4)

10. a) Write down John's temperature:

John's temperature at 9am is .....



John's temperature at 6pm is .....



b) Find the drop in John's temperature between 9am and 6pm.

c) How many degrees were each of his temperatures above normal (37°)?

(6)

————— END OF HOMEWORK EXERCISE —————

[37]